

## LHB Series Manual Limit Switch

FOR BALL VALVES UP TO 6" AND BUTTERFLY VALVES UP TO 8"

### KEY FEATURES

- Now Available with "Dead-Man" Spring Return Handle or Handlever (LHB-SR)
- Remote Monitoring of Critical Services
- Retrofits to Existing Valves
- Robust GFPP Body, Cover and Plate
- 304 Stainless Steel Stem and FPM Seals
- Fits All Hayward® Ball Valves up to 6" and Butterfly Valves up to 8"
- Two Adjustable SPDT 10 Amp at 120 VAC Switches (Open/Close Position)
- 1/2" Conduit Port
- Terminal Blocks for Ease of Wiring
- Meets ISO5211, F05, F07 and F10 Patterns
- NEMA 4X
- Switches CSA Listed
- Patent Pending Design

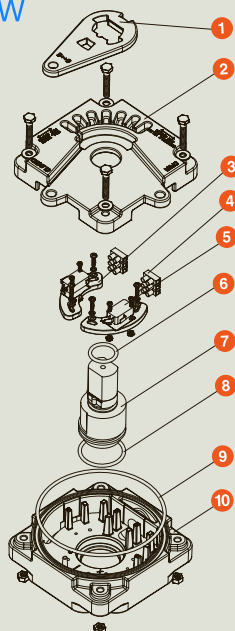
### OPTIONS

- Additional Two Switches
- Potentiometer Available
- Optional Handles – Lever or T-Handle
- LED for Open/Close Indication



## TECHNICAL INFORMATION

### EXPLODED VIEW



### SELECTION CHART

#### MANUAL LIMIT SWITCH MODEL

#### VALVE SIZE/SERIES

LHB-1	1/2" – 2" TB 1-1/2" – 4" BYW
LHB-2	2-1/2" – 6" TB 6" – 8" BYW
LHB-1-SR	1/2" – 2" TB
LHB-2-SR	2-1/2" – 6" TB

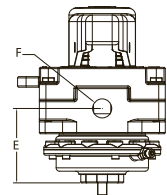
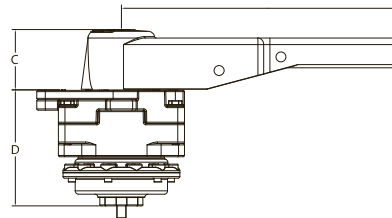
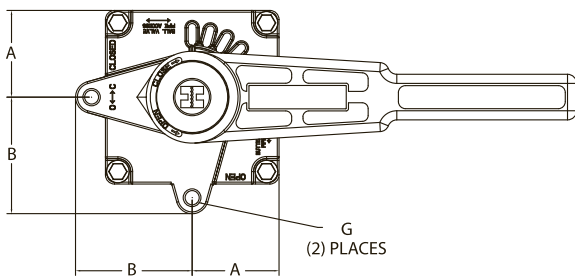
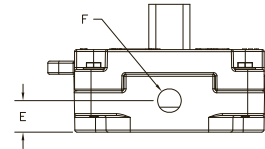
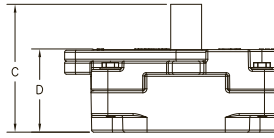
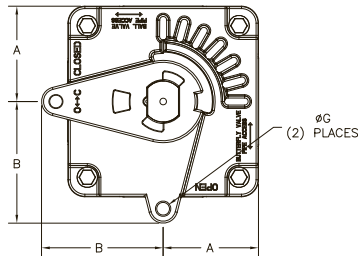
# LHB Series Manual Limit Switch

FOR BALL VALVES UP TO 6" AND BUTTERFLY VALVES UP TO 8"

## TECHNICAL INFORMATION, CONTINUED

### PARTS LIST

1. Lock Plate
2. Cover
3. Adjustment Plate
4. Terminal Block
5. Switch
6. Upper Shaft O-Ring
7. Shaft
8. Lower Shaft O-Ring
9. Body O-Ring
10. Body



### DIMENSIONS

MANUAL LIMIT SWITCH MODEL	VALVE SIZE/SERIES	A in/mm	B in/mm	C in/mm	D in/mm	E in/mm	F in	G in/mm
LHB-1	1/2" - 2" TB 1-1/2" - 4" BYV	2.38/60	3.19/81	3.88/99	2.52/64	.95/24	1/2" NPT	.38/10
LHB-2	2 - 1/2" - 6" TB 6" and 8" BYV	2.89/73	3.69/94	3.88/99	2.52/64	.95/24	1/2" NPT	.38/10
LHB1-SR	1/2" - 2" TB	2.38/61	3.19/81	2.28/60	4.38/112	2.81/71	1/2" NPT	.38/10
LHB2-SR	2-1/2" - 6" TB	2.89/73	3.69/94	2.28/60	2.52/64	112/71	1/2" NPT	.38/10

Dimensions are subject to change without notice – consult factory for installation information



Hayward is a registered trademark of Hayward Industries, Inc. © 2015 Hayward Industries, Inc.

Contact Hayward Flow Control with questions: **USA:** 1-888-429-4635 • Fax: 1-888-778-8410 • One Hayward Industrial Drive • Clemmons, NC 27012 USA  
**Canada:** 1.888.238.7665 • Fax: 1.905.829.3636 • 2880 Plymouth Drive • Oakville, ON L6H 5R4 Canada • Email: hflowcanada@haywardnet.com  
 Visit us at: www.haywardflowcontrol.com • E-mail: hflow@haywardnet.com